

# T.M.O.D.U

ENGINEERING  
SOLUTIONS

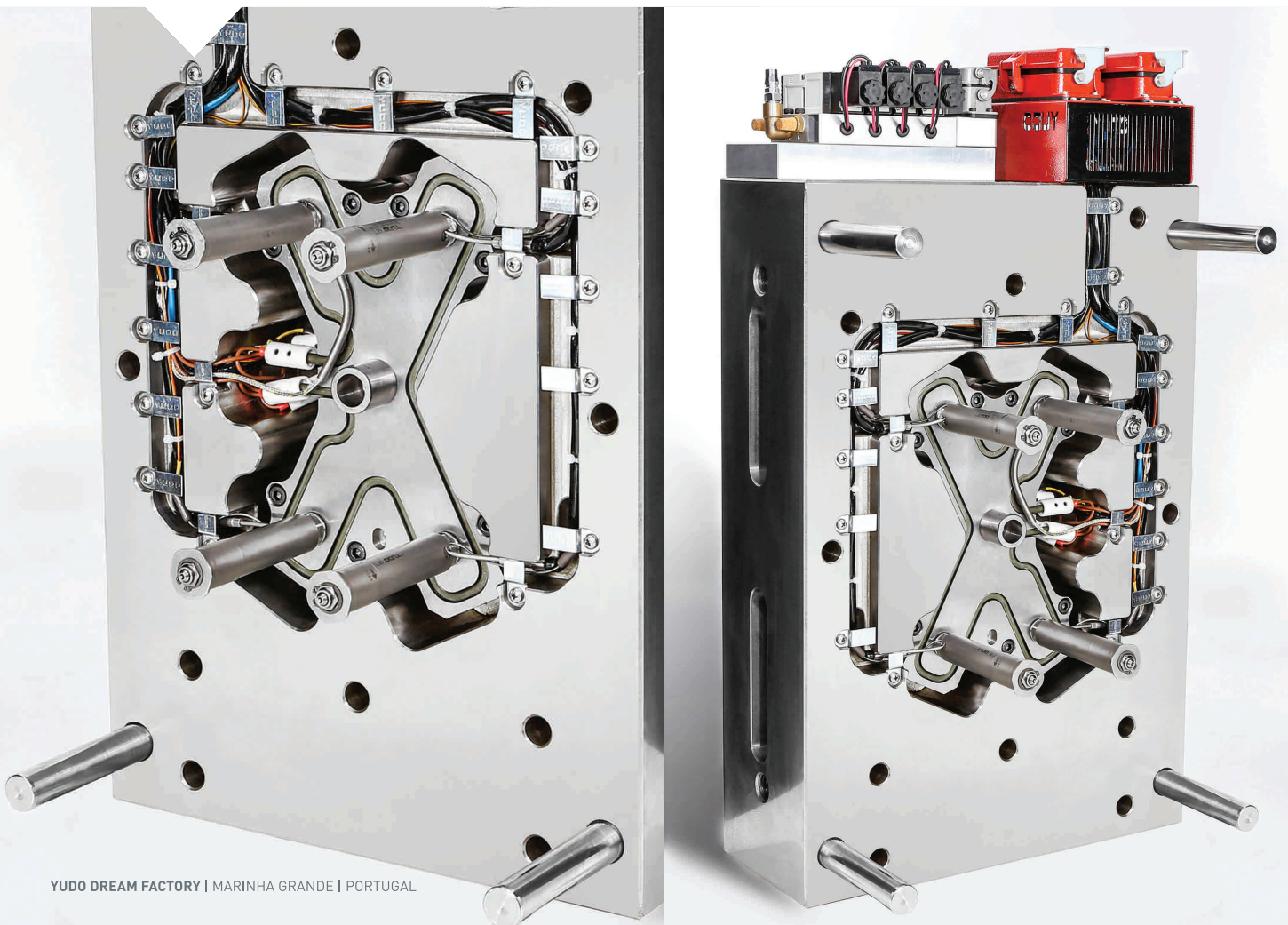


# T.MODU

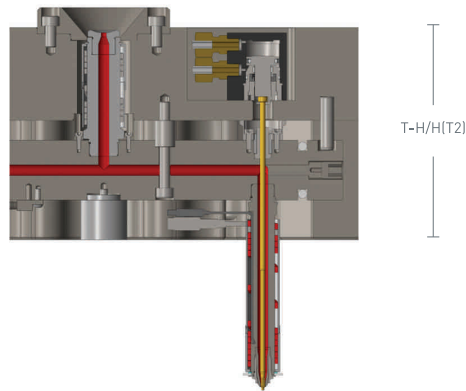
**T.MODU** is a hybrid hot runner system for screwed-in nozzles, which combines the advantages of a typical Hot Half supply with the advantages of screwed-in nozzles.

## MAIN ADVANTAGES

- The injection system is supplied together with the mould's clamping plate.
- Reduced fixation and assembly tolerance for the hot runner.
- Reduced deadline for manufacturing the mould.
- Reduced risk of leakage due to the use of screwed-in nozzles.
- A substantial improvement of the temperature balance due to a reduced contact surface between the hot runner and mould's plates.
- Better performance when changing colour.
- Increased useful life of cylinders and electrical valves.
- Easier maintenance.



## THICKNESS

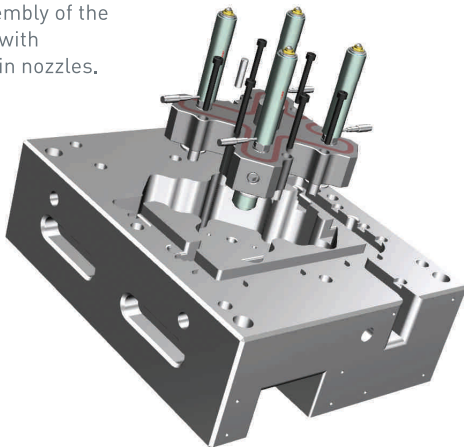


SYSTEM	TINA GP08	TINA GP10	TINA GP15	TINA GP22
T-H/H(T2)	175mm	180mm	185mm	195mm

## FRONT

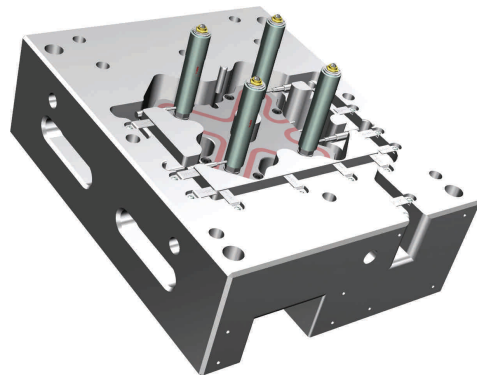
**01**

Easy assembly of the manifold with screwed-in nozzles.



**02**

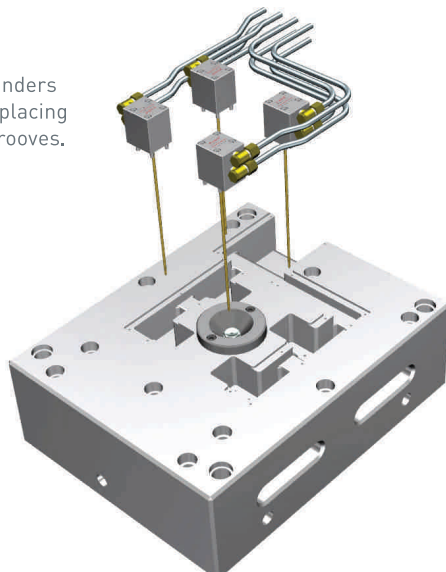
Passing resistance and thermocouple wires through grooves and clamping them with a clip.



## BACK

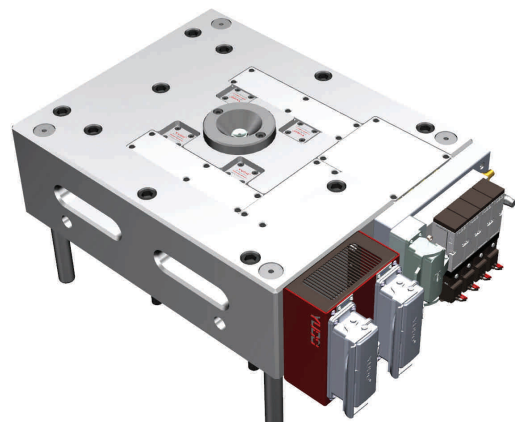
**03**

Assembly of cylinders and valves, and placing pipes through grooves.



**04**

Pneumatic/hydraulic and electrical connections.



## KAM

**DEDICATED ASSISTANCE**  
365 DAY/YEAR  
(KEY ACCOUNT MANAGER)

## R&D

CONSTANT  
INVESTMENT IN R&D  
(**356 PATENTS**)

## GLOBAL

PRESENT IN **47 COUNTRIES**  
WITH PRODUCTION CENTRES  
IN FOUR CONTINENTS.

[www.yudo.eu.com](http://www.yudo.eu.com)

# YUDO<sup>®</sup>

BUILDING  
**TRUST**  
WORLDWIDE