

boehlerit

Soil cultivation
and mechanical
weed control



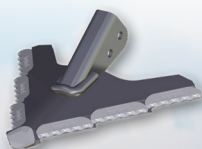
Programme overview

Soil cultivation and mechanical weed control

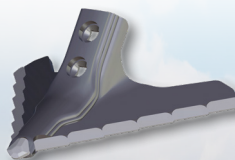
Anyone who always keeps an eye on costs, relies on consistently high quality of work and maximum efficiency, is well served by Boehlerit's agricultural technology products.



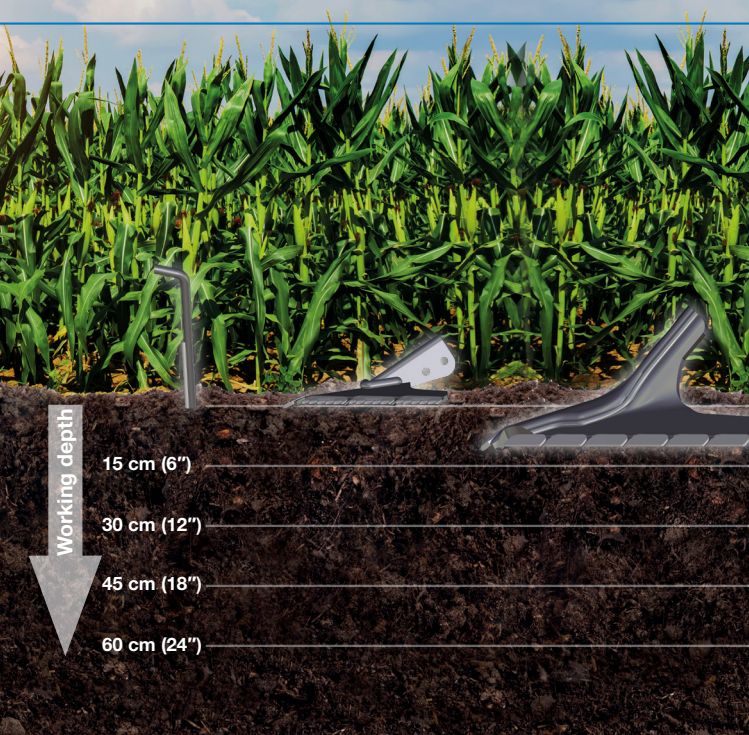
Weeder tines



Hoe blade



Cultivator sweep



Working depth

15 cm (6")

30 cm (12")

45 cm (18")

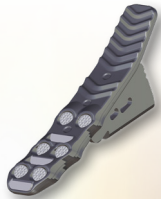
60 cm (24")



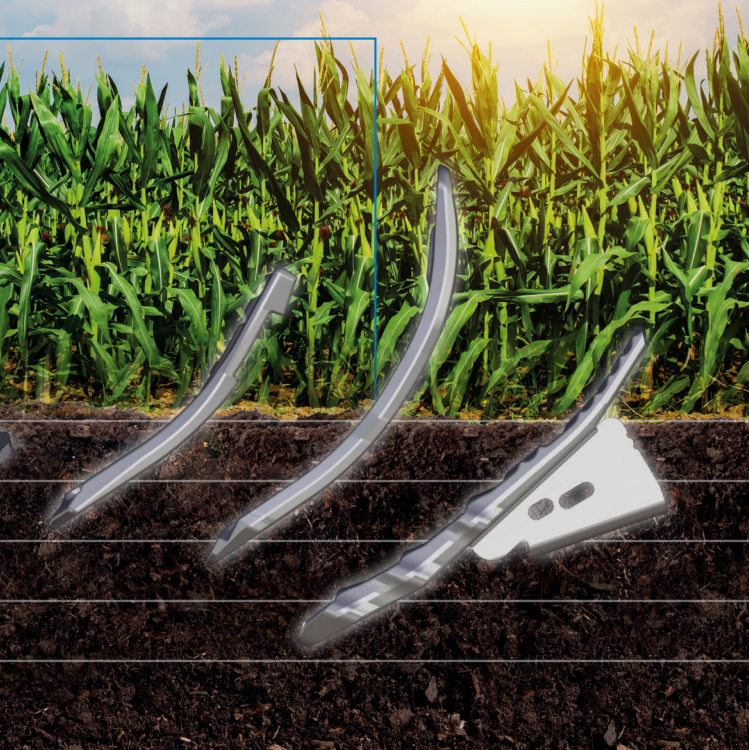
Cultivator share
80 mm (3 1/8")



Cultivator share
50 mm (2")

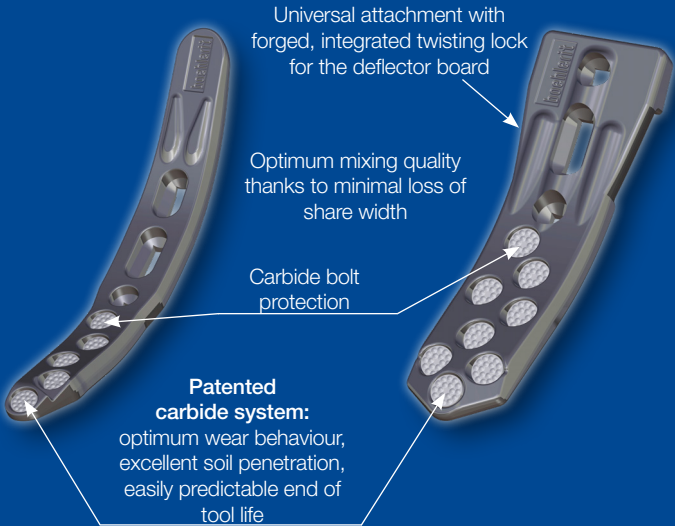


Subsoiler share



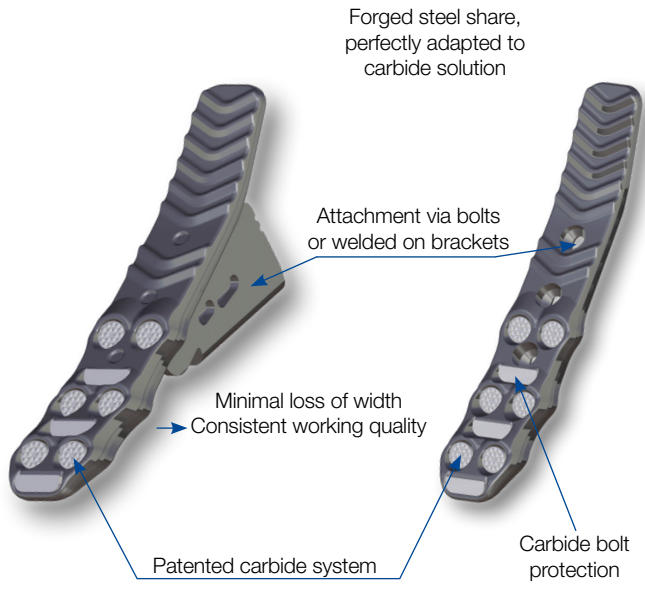
Carbide cultivator share

Working depth: up to 30 cm / 12" (50 mm / 2" share),
up to 25 cm / 10" (80 mm / 3 1/8" share)



Carbide subsoiler share

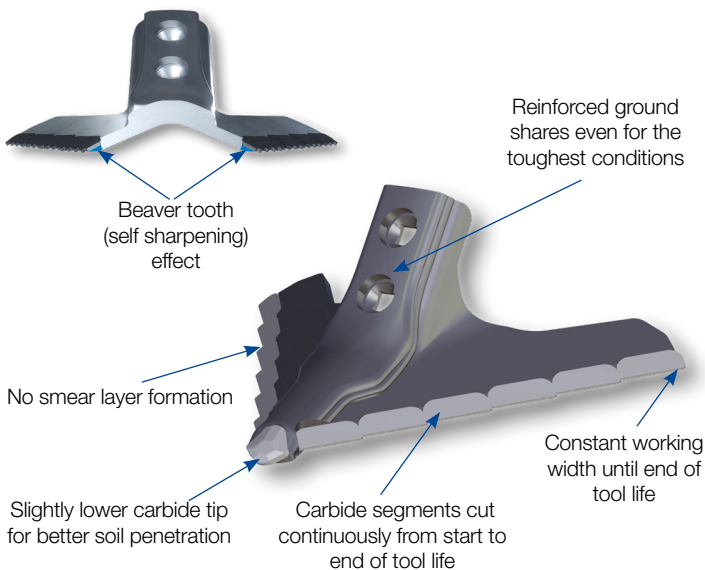
Working depth: up to max. 55 cm (22")



Carbide cultivator sweep

Working depth: up to 10 cm (4")

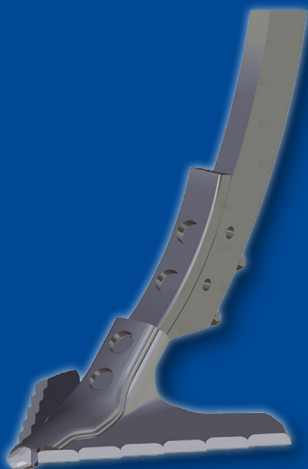
Working widths: 200 - 300 mm (8" - 12")



Adaptation possibilities

- Köckerling Vario
- Köckerling Vector, Quadro
- Horsch Terrano, Tiger
- Pöttinger/Synkro
- Amazone Genius, Ceus
- Väderstad Opus, Cultus
- Väderstad Swift
- Lemken Karat, Kristall

Mounting example Horsch	
5141611	GF300V_BM57724R0
5157196	GF Adapter Horsch
5154992	Screw M 12 x 90 10.9
5154986	Screw M 12 x 50 10.9
5154989	Flanged nut M12



Carbide hoe blade

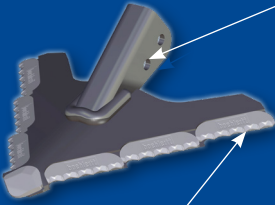
Working depth: up to 3 cm (1 1/4")

Working width: 100 - 200 mm (4" - 8")



Beaver tooth
(self sharpening)
effect

Different attachments welded
on the same basic blade



Serrated carbide segments for even
better cutting through or tearing out



Slightly lower carbide tip
for better soil penetration

Carbide weeder tines

Tine diameter
from 6 - 10 mm (1/4" - 3/8")

For crop- and grassland weeders

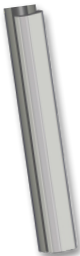
Tine diameter
from 12 - 16 mm (1/2" - 5/8")

Especially suitable for straw harrow
(heavy harrow)



Carbide half shell
usable from
6 - 10 mm
(1/4" - 3/8")

Carbide half shell
usable from
12 - 16 mm
(1/2" - 5/8")



- Increase of tool life
up to 10 times
- Aggressive quality of work
due to no worn tine edges
- Protection of the crop due
to half shell shape
- Sharp edge until end of tool life

Wear behaviour Carbide share

boehlerit

Cultivator share



approx. 10 % wear



approx. 25 % wear



approx. 50 % wear

Cultivator sweep



12 m Horsch Cruiser,
approx. 450 ha



6 m Köckerling, 400 ha
(light humus soil)



Consistent wear, width
completely maintained

Maintaining the full
working width until the
end of the tool life!

Hoe blade



HS160A2
after about 100 ha,
saw teeth still clearly visible



HS180A1, 12-row
after about 350 ha



HS180A1, 12-row
after about 600 ha,
15 - 20 % of tool life left

Maintaining the full
working width until the
end of the tool life!

Subsoiler share



Maintaining the
share width



Excellent soil penetration throughout the whole tool life by always remaining at least one carbide tip



**Agricultural technology
innovations in the full
product range**

boehlerit

In recent years, Boehlerit, a carbide company rich in tradition, has invested a great deal of technical know-how in the development of tools for soil cultivation.

Designed for optimum working quality and high wear protection, the main focus of our soil cultivation tools is on economic efficiency, maximum productivity and an increase in service life of up to 10 times.



Boehlerit GmbH & Co. KG
Werk VI-Straße 100
8605 Kapfenberg
Austria
Phone +43 3862 300 - 0
Telefax +43 3862 300 - 479
sales-at@boehlerit.com
www.boehlerit.com

Boehlerit GmbH & Co. KG
Heidenheimer Straße 108
73447 Oberkochen
Germany
Phone +49 7364 950 700
Telefax +49 7364 950 720
bld@boehlerit.de
www.boehlerit.com